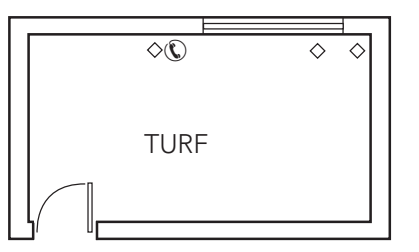
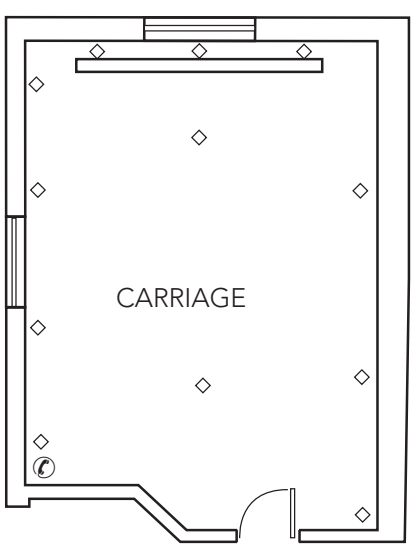
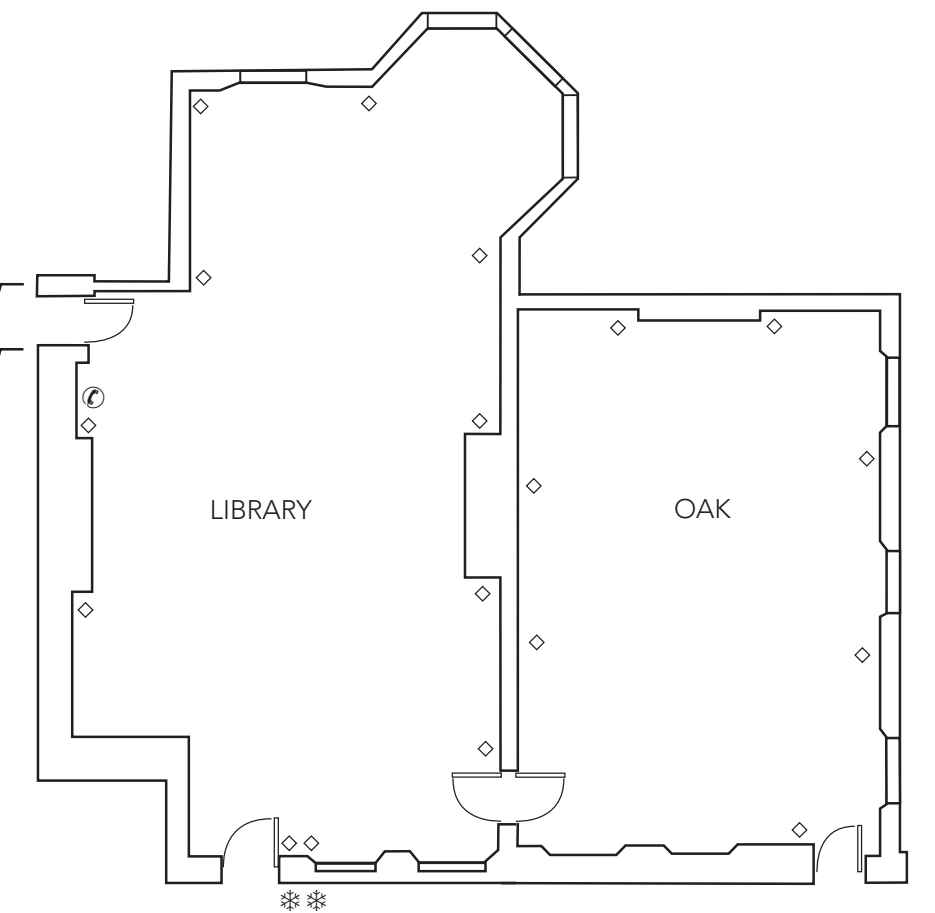
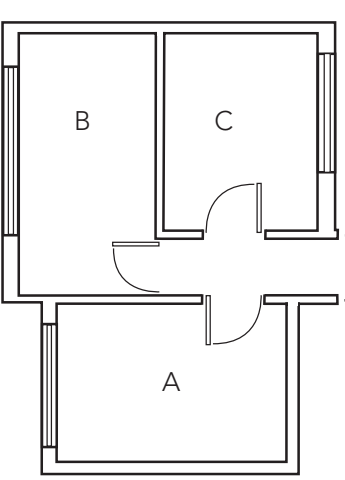
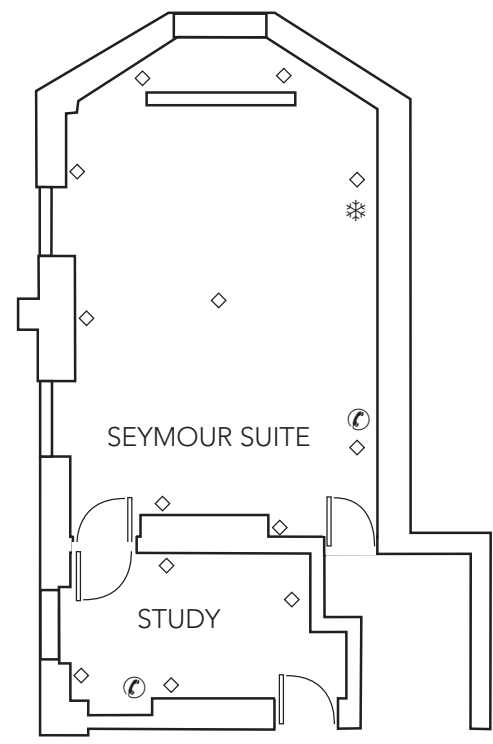
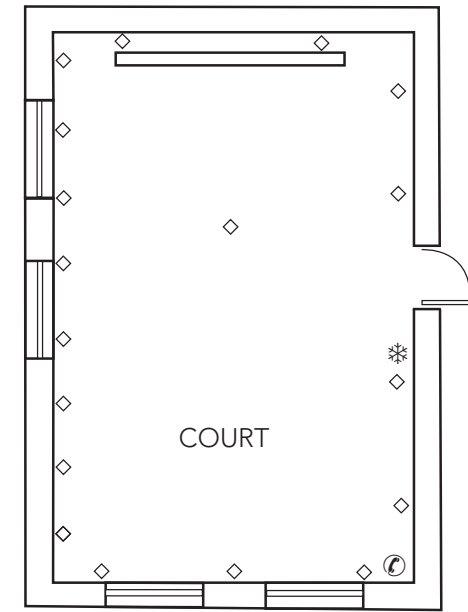
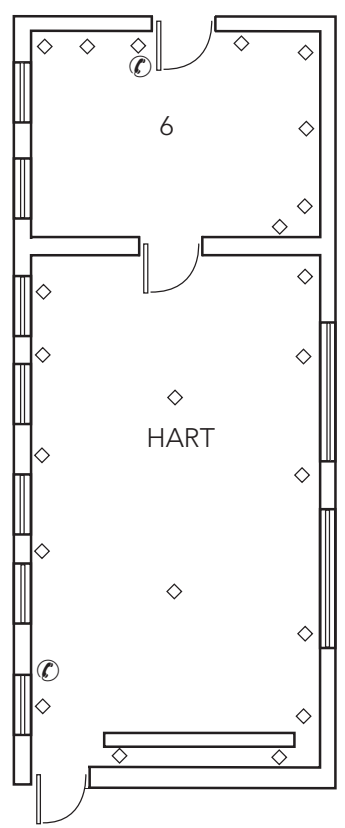
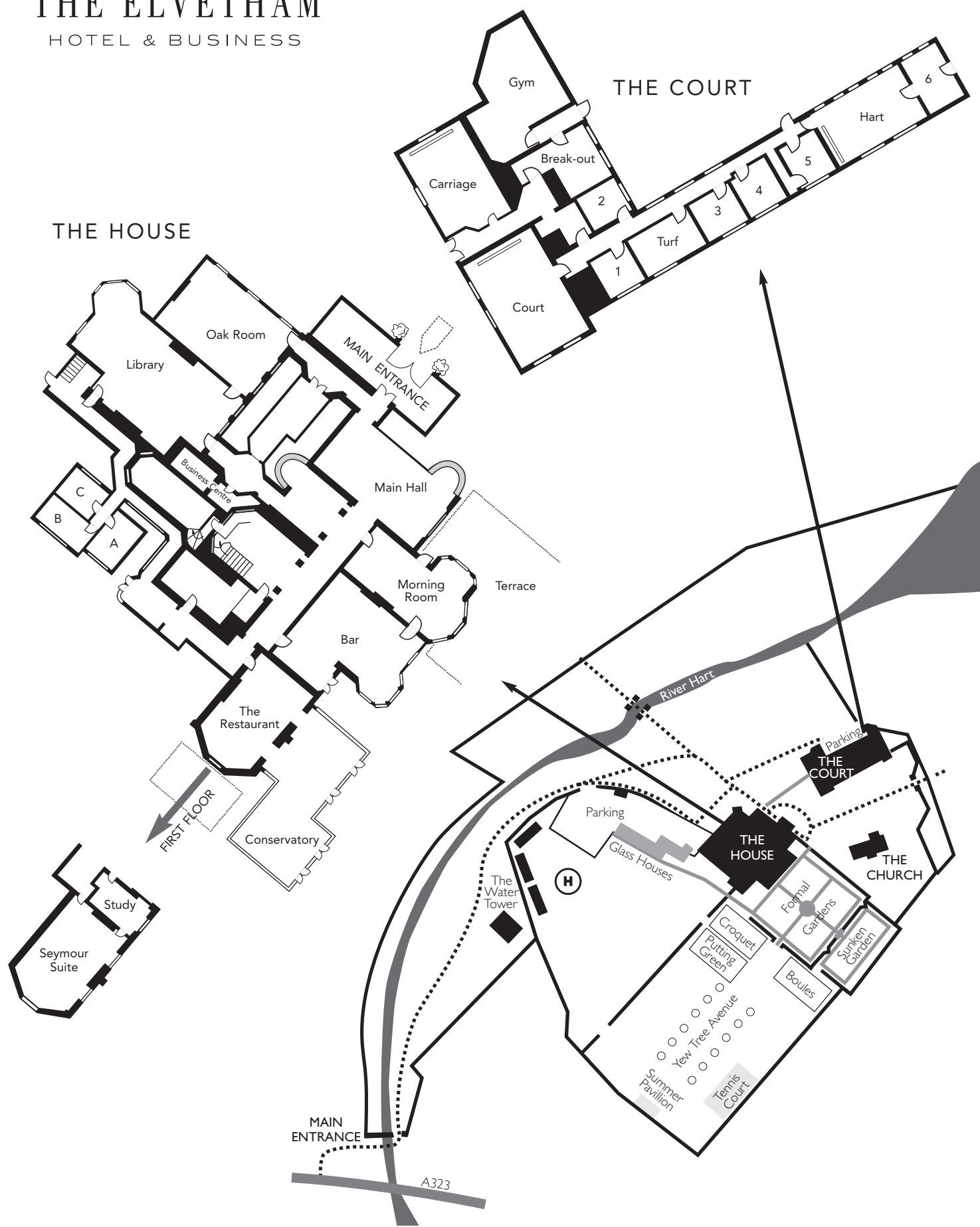


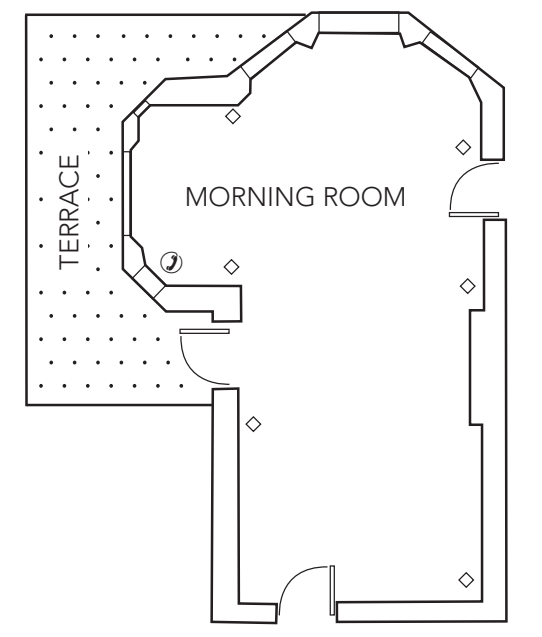
THE ELVETHAM
HOTEL & BUSINESS



THE ELVETHAM : ROOM CAPACITIES & DIMENSIONS

Room	Boardroom	Classroom	Cabaret	Open U	Theatre	Reception	Dinner	Dimensions cms	Area sq metres
The Library	48	80	100	43	110	200	100	774 x 1625	117.04
Seymour Suite	36	36	40	30	50	60	-	621 x 980	61.00
Oak Room	36	36	30	23	67	100	50	715 x 1053	71.00
Morning Room	24	30	40	30	80	60	40	652 x 1127	84.49
Court Room	42	48	50	36	60	-	-	727 x 1104	77.00
Hart Room	36	30	40	30	48	-	-	577 x 967	52.25
Carriage Room	34	45	30	26	63	-	-	656 x 970	54.32
Turf Room	14	12	12	16	24	-	-	400 x 649	24.70

Syndicate rooms are available for a capacity of 8 - 10 people
High speed wireless internet access available in all rooms



Hartley Wintney • Hampshire • RG27 8AR
+ 44 (0)1252 844 871
enq@elvethamhotel.co.uk www.elvethamhotel.co.uk